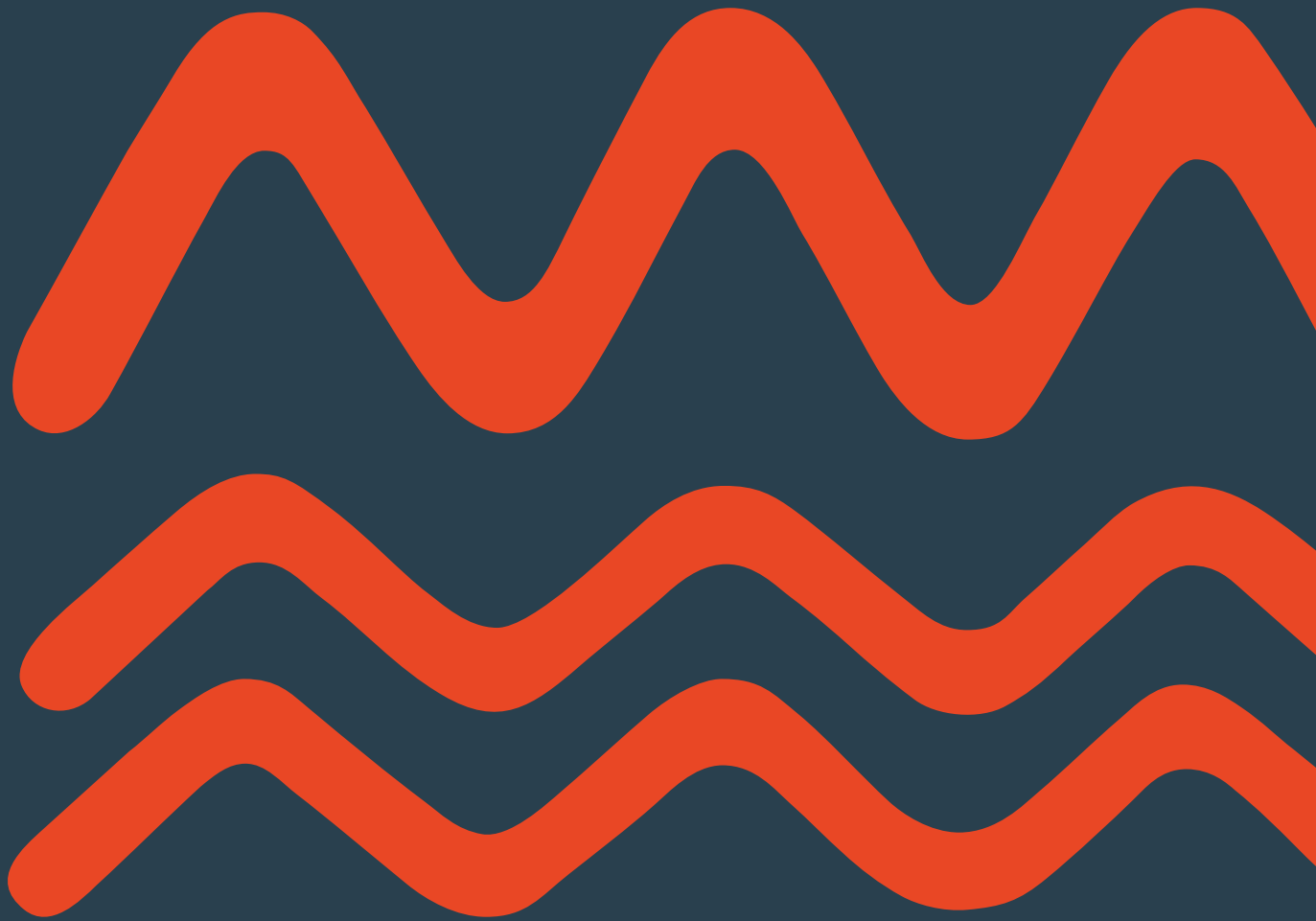


TRADE PRODUCT GUIDE



RUAPEHU

OUR GREATER OUTDOORS

Escape to Ruapehu and you'll arrive in a living landscape that's home to ancient rainforests, volcanic landscapes, sacred mountains, tranquil rivers and two of our cherished national parks.

Just half a day and a world away from our biggest cities, this natural getaway welcomes you - whether you're bound for a luxury hotel or local campsite, mountain lodge or DOC hiking hut. Wherever you stay, you'll enjoy easy access to wilderness.

With its wide range of alpine and on-water activities, this unique destination caters to all levels, all year round. So whether it's an easy family walk to enchanting waterfalls, Ruapehu snow-sports, an awesome hike around the mountain, an exhilarating mountain-bike ride through beach forest or an inspiring journey down the Whanganui River, it's brimming with opportunities to connect with our greater outdoors.

Pause beneath the maunga - or mountains - take in the wonder of this unspoilt environment and you'll quickly realise why it's so revered by locals. Ruapehu's culture is as rich and alive as its dramatic geology.

It's a place where nature inspires you, just like it inspired a young Edmund Hillary who first discovered his lifelong passion for mountains here. Something magical happens when you spend time in Ruapehu.

Ruapehu is your place in the world. Leave part of yourself, take part of us with you.

RUAPEHU IS LOCATED IN THE CENTRAL NORTH ISLAND, NEW ZEALAND AND IS CONVENIENTLY LOCATED HALFWAY BETWEEN AUCKLAND AND WELLINGTON.

DRIVING DISTANCES TO RUAPEHU*

City	Distance	Time
Auckland Intl. Airport	310km	4 hours
Hamilton	202km	2.5 hours
Tauranga	252km	3 hours
Rotorua	181km	2 hours 15 mins
Taupō	110km	1 hour 20 mins
Palmerston North	203km	2.5 hours
Whanganui	121km	1.5 hours
Napier	234km	3 hours
Wellington	321km	4 hours

TRAIN

Great Journeys of New Zealand's Northern Explorer service between Auckland and Wellington delivers passengers into the heart of Ruapehu with stops at Taumarunui, National Park and Ohakune.

TRANSPORT

Both commercial ski areas, Tūroa and Whakapapa, are serviced by local bus transport operators. There are a variety of transport options to access many of the region's walks, in particular the Tongariro Alpine Crossing. Mountain bike shuttle services also are available.

*Distance measured to National Park Village in Ruapehu



OUR VALUES

The Destination Management plan for Ruapehu has been developed as a blueprint to guide our region to achieve a more connected, holistic, values-based lifestyle where our people and our special place benefit from the visitor economy. Where there is a fair exchange of value between and amongst our natural environment, our local population and our visitors. We are on a courageous journey together to redesign a resilient, reciprocal eco-system across our region where environment is at the centre of the decisions we make.

Mana Taiao

He mana te taiao, ko ana kai he kōrero
The paramount mana of our natural environment protects and provides for the wellbeing of all.

We recognise the vast landscapes we are responsible to and the mana that vibrates throughout them. We will seek the skills to listen to those vibrations, to be guided by the whispers of our natural environment.

Tiakitanga

Ko te tiaki i te ao me ngā taonga katoa hei oranga mō tātou, mō ngā uri whakatupuranga

Presence and expression of the preservation, guardianship and enhancement of what we have for the future benefit of all.

Designing our own Ruapehu Tiaki promise of care for our environment that holds us all as community and visitors accountable for the wellbeing of our natural taonga to our future generations, passing on more than just the pride we have for our special place in the world.

Manaakitanga

Ko te mea nui ko te mana o te taiao, o te whānau, o te hāpori me te iwi

The presence and expression of mana enhancing behaviours and practices in everything we do across our shared region.

To care for each other, our communities, visitors and natural environment is fundamental to our identity as Ruapehu.



Whānaungatanga

Mā te whānaungatanga te hāpori e kōtuitui, e whakatairanga, e manaaki hei oranga whānui

Connecting, fostering and maintaining relationships for the wellbeing of all.

We recognise the vast landscapes we are responsible to and the mana that vibrates throughout them. We will seek the skills to listen to those vibrations, to be guided by the whispers of our natural environment.

Mana Tangata

Mā te wairua e ārahi te aroha, mā te aroha e ārahi te tāngata

People who are vibrant, flourishing and connected; whose actions express love for each other and their shared place.

Ruapehu is home to proud people, who respect each other's distinctiveness, who respect each other's contributions to community and unique townships.

Tirohanga Māori

Mā ngā tikanga Māori te ture, te aranga Māori e whakatinanatia

Processes, practices, procedures that are consistent with a Māori worldview will guide our entire region.

We recognise the importance of a Māori worldview, tikanga Māori and mātauranga Māori. This is a respected lens steeped in ancient wisdom that will allow us all to navigate a responsible, ethical and innovative journey into the future.

WHERE IS RUAPEHU?



ACCOMMODATION PROVIDERS Pg

A	Timber Trail Lodge	7
B	Bradley's Garden	8
C	The Inn at the Convent	9
D	Omaka Lodge	10
E	Te Awa Glamping	11
F	The Old Post Office Lodge	12
G	Retaruke Country Estate	13
H	Skotel Alpine Resort	14
I	Blue Duck Station	15
J	Plateau Lodge	16
K	The Park Hotel	17
L	Tongariro Crossing Lodge	18
M	Mountain Heights Lodge	19
N	Nightsky Cottage	20
O	Tongariro Suites	21
P	The Powderhorn Chateau	22
Q	The Peaks Motor Inn	23
R	Kings Ohakune	24
S	Ruapehu Country Lodge	25
T	Rocky Mountain Chalets	26
U	Manuka Lodge	27
V	The River Lodge	28

ACTIVITY PROVIDERS Pg

1	Retaruke Country Estate	13
2	Blue Duck Station	15
3	Mt Ruapehu	30
4	Forgotten World Adventures	31
5	Ruapehu Adventure Rides	32
6	Whanganui River Adventures	33
7	Whanganui River Canoes	34
8	Nevalea Alpacas	35
9	National Army Museum Te Mata Toa	36
10	Adrift Tongariro	37
11	Blazing Paddles Outdoors	38
12	Owhango Adventures	39
13	Dempsey Buses	40
14	Whanganui Tours	41
15	TCB Ski Board Bike	42
16	Timber Trail Adventures	43

ACCOMMODATION

KEY



Wi-Fi



Pool/Spa



Breakfast



Conference
Room



Drying
Room



Restaurant/
Bar

BRADLEY'S GARDEN

Bradley's Garden is a unique experience with a luxury boutique bed and breakfast set amidst a 5-star garden of national significance.



Bradley's Garden offers a range of activities including garden tours, a 9 hole mischievous mini putt golf course, outdoor chess and a gorgeous Devonshire tea in the bespoke garden gazebo complete with fine china.

Located just 3km from Taumarunui and 1km off the Forgotten World Highway, Bradley's Garden is a hidden gem of peace and tranquillity that will surprise and delight... an experience to remember.



KEY INFORMATION



Number of Rooms: 1 bedroom in a fully self-contained suite. Plus 4 bedrooms in a well-appointed self-contained country retreat home.

Facilities: The fully self-contained suite has a superior quality queen bed and linen with ensuite as well as a fully functional kitchen and private spa. The country retreat has a full kitchen, lounge, dining area as well as a washer and dryer.

Both properties have access to Bradley's Garden 5-star Garden of National Significance as well as a 9 hole mischievous mini putt golf course. Private spa for self-contained suite accommodation. Free Wi-Fi, Sky TV, garden tours, mini putt golf course, Devonshire tea, wedding venue, outdoor giant chess, overnight park over property for campervans or RVs. Washer and dryer for country retreat accommodation.

Location: Taumarunui
Email: melana.bradley@extra.co.nz
Phone: +64 274 452 074
Contact: Melana Bradley

Address:
26 Totaranui Drive
Taumarunui 3991
New Zealand

www.bradleysgarden.co.nz

THE INN AT THE CONVENT

Receive a warm welcome when you arrive at this beautiful historic, converted convent. The Inn at the Convent is a boutique bed and breakfast with four unique rooms that are well-designed, spacious, and decorated in style. Scrumptious breakfast sets you up for the day.



The Inn at the Convent is conveniently located in central Taumarunui, just two minutes by car to Forgotten World Adventures, seven minutes to first class rounds at Taumarunui Golf Course or a fifteen minutes' drive to the iconic Timber Trail.

It's also a short drive to Lauren's Lavender Farm or Nevalea Alpacas – home to New Zealand's largest alpaca farm or head south to National Park, just 30 minutes by car and your gateway to outdoor adventures at the world-renowned Tongariro National Park.

Guests can also enjoy wonderful local walks through the Rangaroa Reserve with a native Totara forest, towering redwood trees and fantastic views of the town, just a two-minute walk from the Inn at the Convent.

As well as offering comfortable, well-appointed rooms, and top-notch hospitality, The Inn at the Convent has a beautiful garden to enjoy where visitors can relax, unwind with a book, or soak up the sun. Lunch and dinner are available on request.



KEY INFORMATION



Number of Rooms: 4 queen rooms
– 1 x ensuite, 3 x shared bathrooms.

Facilities: Continental breakfast,
pet friendly, Wi-Fi, courtesy transport and
BBQ facilities.

Location: Taumarunui
Email: june@theinnattheconvent.co.nz
Phone: 0800 775 223
International Phone: +64 789 67764
Contact: June Nevin

Address:
9 High Street, Taumarunui
New Zealand

www.theinnattheconvent.co.nz



OMAKA LODGE

Located only 7kms from the friendly township of Taumarunui, down the incredible Forgotten World Highway, lies Omaka Lodge, a boutique bed and breakfast venue in the heart of New Zealand's forgotten world.



The short drive out from town follows the Whanganui River and is a beautiful scenic tour to experience all year-round. At the end of a tree lined sealed driveway, you'll find Omaka Lodge and its exquisite gardens.

Well positioned on the crest of a hill, with magnificent views of Herlighy's Bluff, Mount Hikurangi and a peek of Mount Ruapehu, this is a unique, unforgettable venue that you won't want to leave, and offers total privacy and seclusion.

Situated amidst working farmland, Omaka Lodge and its grounds are surrounded by the sights and sounds of everyday country life, where sheep and cattle dot the rolling green-pastured hills and valleys that echo to the melodious sound of never-ending birdsong. Omaka Lodge is set on several acres of picturesque grounds and warmly welcomes groups or individuals.



KEY INFORMATION



Number of Rooms: 5 rooms in a variety of configurations.

Facilities: Tennis courts, air conditioning, free Wi-Fi, swimming pool, spa bath and continental breakfast.

Location: Taumarunui

Email: contact@omakalodge.nz

Phone: +64 7 974 8543

Key Contact Person:

Scott McPherson and Christopher Riches

Address:

11 Omaka Rd
Taumarunui 3991
New Zealand

www.omakalodge.nz

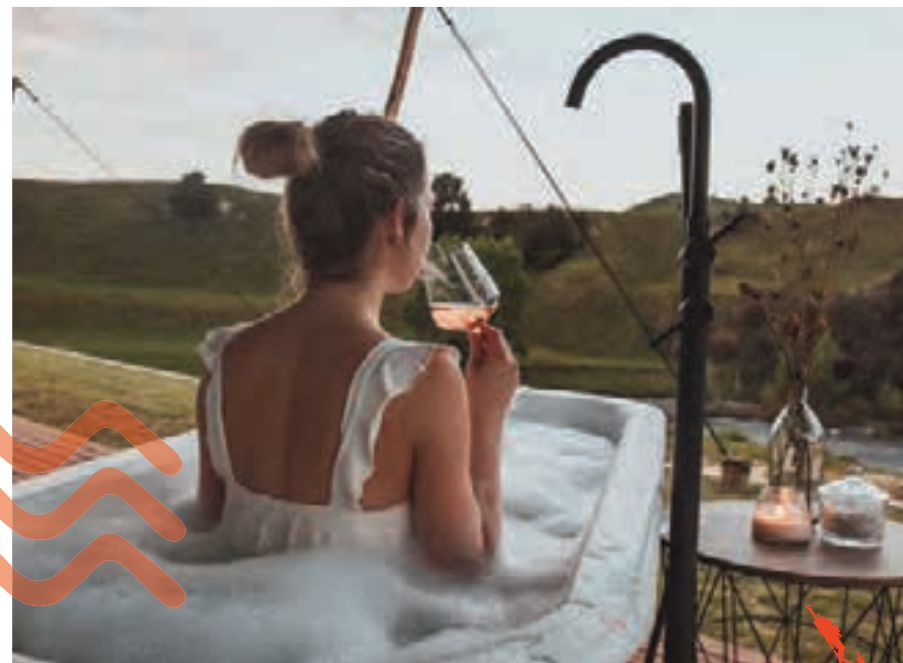


TE AWA GLAMPING

Located deep within a family farm, Te Awa Glamping is a luxury escape on the banks of the mighty Whanganui River. Our luxury tent offers everything you will need to unwind, or if you are an active relaxer, you can grab a bike or hiking boots and explore the range of trails in the area, canoe or jet boat down to the Lavender Cafe or explore New Zealand's wondrous forgotten world.



Our luxurious, spacious tent is completely off-the-grid and is an elegant fusion of comfort and a sense of oneness with nature. Inside the tent there is a king bed, kitchenette and fully functioning bathroom as well as other creature comforts, while outside there is generous deck which helps you make the most of dazzling river views throughout your visit. Each guest is welcomed with a hamper full of delicious goodies including freshly baked bread, free range eggs, locally made muesli and other goodies we think you will love. However you choose to unwind, you will find more than just glamping when you stay with us.



i KEY INFORMATION

Number of Rooms: 1 open plan living/sleeping area with king bed and ensuite.

Facilities: Completely off-the-grid, solar powered, custom-built eco explorer tent. Private river access with outdoor fire pit and outdoor bath. Spacious deck with yoga mats available for use. Picnic table, picnic blankets, kayak, paddles, life vests, helmets and TreePod.

Location: Taumarunui
Email: info@teawaglampping.co.nz
Phone: +64 7 8968698
Contact: Louise Donaldson

Address:
1291 State Highway 43
Taumarunui 3991
New Zealand

www.teawaglampping.co.nz



THE OLD POST OFFICE LODGE

Situated in the heart of the North Island's outdoors capital of the Ruapehu region, and on the edge of the Tongariro National Park conservation areas, the Old Post Office Holiday Home is an iconic century-old boutique bungalow that has been lovingly renovated into a lavishly opulent fully self-contained bespoke vacation home, ideal for small or large groups of singles/couples, small and large family groups, and corporate retreats. Regarded as one of the best historic accommodation stays in New Zealand, this stunning non-hosted property is perfect for those visitors desiring an elegant 4-star bespoke property rich in local heritage.



Centrally located half-way between Taumarunui town and National Park village (and half-way between Auckland and Wellington), the Old Post Office Holiday Home is a stunning art-deco 7-bedroom vacation home which can be reserved in its entirety for larger groups accommodating up to 16-17 guests or can be booked as the fully self-contained 3-4 bed roomed west-wing or east-wing.

There are six beautifully appointed queen/double bedrooms, plus an uber cool interconnecting dorm room with single beds, along with two fully equipped kitchen-dining rooms, and two laundries. Additionally, the west-wing has a lavish Gatsby-inspired lounge, gun vault with ammo safe, drying room cupboard and a back deck with traditional Finnish sauna cabin plus alpine hot-tub spa-pool and fire-pit inside the west wing there's even a shower converted from the original Post Office phonebooth, plus fabulously rich décor throughout, including much irreplaceable Post Office memorabilia.

KEY INFORMATION



Number of rooms: 7 bedrooms (available as whole bungalow, or 1-4 bed roomed west-wing or 2-4 bed roomed east-wing).

Facilities:

- West Wing: Opulent lounge, gorgeous kitchen-dining room, lavish 4-poster master queen bedroom, elegant 'peacock' double bedroom, pretty triple bedroom (double-single bunk-bed), drying room cupboard, gun vault, and back deck with Finnish sauna cabin, hot tub, spa pool and fire pit.
- East Wing: Well-equipped kitchen/dining/laundry, plus 3 x queen/double bedrooms and bathroom.
- Dorm Room: 4 x single beds – able to belong to the west-wing or east-wing.
- Adjacent lockable garage to safely store outdoor equipment.
- The popular "42-traverse selfie wall" is also located next to the far side of the garage.

Location: Ōwhango (half-way between Taumarunui and National Park Village)
Email: info@theoldpostofficelodge.co.nz
Phone: +64 27 6048323
Contact: Kathy or Mary

Address:
42 Ōwhango Rd
(Cnr Ōwhango Rd and State Highway 4), King Country
National Park Ward
Ruapehu District

www.theoldpostofficelodge.co.nz

RETARUKE COUNTRY ESTATE

Take the opportunity to experience rural New Zealand as it exists off the beaten track - real, natural and unfiltered. Hosted by Carolyn and Glenn, guests enjoy exclusive use of this upmarket boutique lodge set in over 4,000 acres of stunning bush, rivers and farmland west of National Park, Ruapehu.



Activities on-site at Retaruke Country Estate are all inclusive and include farm tours, horse trekking, 4x4 trips, nature walks, mountain biking, opportunities to see some of New Zealand's special wildlife and to engage in conservation activities.

Alternatively, guests can just enjoy this special and very well-appointed lodge in the relaxed comfort that comes with being the only guests. Experience Carolyn's delightful country cooking, lie back in the outdoor loungers while watching wild deer on the clearings opposite or soak in the outdoor hot tub while enjoying the total peace and quiet. The perfect spot to catch one's breath.



KEY INFORMATION



Number of Rooms: 3, each with 1 king size bed and ensuite or own bathroom.

Facilities: Guests have use of the whole lodge which includes 2 lounges with a cosy log fireplace, outdoor hot tub and outdoor fireplace set in spacious grounds. Laundry facilities. kitchen. Inclusive in the price are all meals, wine, and beer and all on-property activities.

Location: National Park
(Upper Retaruke at end of Fishers Track)
Email: info@retarukecountryestate.co.nz
Phone: +64 27 721 2982
Contact: Carolyn Newell

Address:
339 Kurua Road, RD2
National Park 3990
New Zealand

www.retarukecountryestate.co.nz

SKOTEL ALPINE RESORT

Welcome to New Zealand's highest hotel. Skotel Alpine Resort has prime position on the upper edge of Whakapapa Village within Tongariro National Park. The exposed timber design beautifully blends into the stunning natural landscape of this unique alpine village.

Skotel Alpine Resort is a true alpine retreat nestled in tussock in the heart of Tongariro National Park on the edge of Whakapapa Village.

Accommodation includes 5 self-contained cabins that sleep 6 (queen bed and 2 bunk sets), 33 Qualmark-rated three-star hotel rooms (available in a range of set-ups including queen plus single beds or queen plus bunk set). There is also a backpacker's wing with 12 individually booked rooms that sleep three.

The hotel facilities include a licensed a-la-carte restaurant with a menu to cater for discerning guests, a bar, 2 spa pools, sauna, gym and gear hire for both summer and winter. The bar has stunning views of Mount Ngāuruhoe and all the hotel rooms or their balconies have mountain views.

Skotel is ideally placed for both summer hiking and winter skiing as well as sightseeing and stargazing year-round.



Shuttle transport is available from the door to both the ski fields and the Tongariro Alpine Crossing. Three of the best half-day walks in Tongariro National Park start just metres from Skotel.

KEY INFORMATION



Number of Rooms: 5 self-contained cabins that sleep six, 34 hotel rooms, backpacker wing with 12 rooms that sleep three.

Facilities: Licensed restaurant, bar, spa pools, sauna, gym, shuttle, Wi-Fi, massage room.

Location: Whakapapa Village
Email: manager@skotel.co.nz
Phone: 0800 756 835
International Phone: +64 7 892 3719
Contact: Sam and Kaz Clarkson

Address:
1 Ngāuruhoe Place
Whakapapa Village 3951
New Zealand

www.skotel.co.nz

BLUE DUCK STATION

Located on the banks of the Whanganui and Retaruke Rivers and surrounded by Whanganui National Park, Blue Duck Station is an outdoor enthusiast's playground. Blue Duck Station is just a 1 hour drive from National Park or Taumarunui.



Offering a variety of accommodation options from converted shearers quarters to exclusive self-contained lodges, Blue Duck Station is the ideal location to get off the beaten track and into pristine wilderness. Whether you just want to spend a couple of nights here as part of your Whanganui River journey, as you cycle the mountains to Sea Ngā Ara Tūhono Connected Pathways, or simply enjoy a few nights together with family or friends, Blue Duck Station is an extraordinary destination getaway with a fantastic range of accommodation options to suit.

Occupying 7200 acres of farmland and native bush, Blue Duck Station is a working sheep and beef farm and conservation project. The conservation work includes predator control, protecting the waterways, regenerating native bush/habitat of the whio (blue duck) and other native wildlife. In addition to accommodation and an awesome range of outdoor activities, Blue Duck Station offers a fantastic café and top of the world dining at the renowned Chef's Table.



KEY INFORMATION



Number of Rooms: 32 rooms – sleeps max. 96 people.

Facilities: Café, kitchen, lounge, log fire, deck and BBQ.

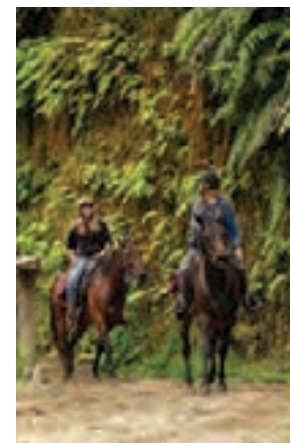
Product: Horse trekking, guided hunting, bush safaris, kayaking and jet boating. There is also lots of hiking and mountain biking available.

Price Range for activities: \$95 - \$1,875

Location: Whakahoro
Email: info@blueduckstation.co.nz
Phone: +64 7 895 6276
Contact: Melissa Rickards

Address:
4265 Oio Rd
Whakahoro 3990
New Zealand

www.blueduckstation.co.nz



PLATEAU LODGE

Located on the edge of the UNESCO Dual World Heritage Site of Tongariro National Park, Plateau Lodge is the perfect place to make yourself at home and a welcoming haven perfectly located with easy access to Ruapehu's greater outdoors in the heart of National Park Village.



Plateau Lodge offers a great mix of accommodation types including 2-bedroom apartments, king studio pods, private lodge rooms and cosy ensuites. On site is a communal lounge and kitchen, guest laundry, Wi-Fi, breakfast and lunch options. Restaurants, bars and cafes are within walking distance from Plateau Lodge along with a supermarket, bus and train station.

Number of Rooms: 6 x two bedroom fully self-contained apartments (sleeps up to 6), 6 x lodge rooms, 1 x ensuite rooms, 9 x newly built king studio pods.

Facilities: Communal lounge and kitchen, guest laundry, Wi-Fi, lunch and breakfast, bike storage and wash down area, ski storage, Tongariro Alpine Crossing shuttle and Whakapapa Village day trip shuttle.

KEY INFORMATION



Number of Rooms: 6 x two bedroom fully self-contained apartments (sleeps up to 6), 9 x lodge rooms (5 x standard rooms, 1 x shared dormitory rooms, 1 x family ensuite room, 2 x ensuite rooms, 9 x newly built studio pods.

Facilities: Communal lounge and kitchen, guest laundry, Wi-Fi, lunch and breakfast, bike storage and wash down area and ski storage.

Location: National Park Village
Email: info@plateaulodge.co.nz
Phone: 0800 861 861
International Phone: +64 7 892 2993
Contact: Andrea Messenger

Address:
17 Carroll St
National Park Village 3948
New Zealand

www.plateaulodge.co.nz

THE PARK HOTEL

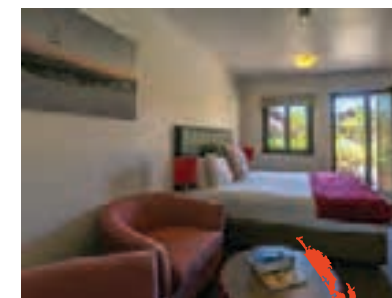
Located at National Park Village, The Park Hotel is the place to stay and your gateway to Ruapehu and Tongariro National Park with outdoor attractions including the Tongariro Alpine Crossing, Whakapapa Ski Areas and Happy Valley on Mount Ruapehu.



Quality 3-star hotel accommodation with the popular Spiral Restaurant and Bar, open fireplace and inviting outdoor hot tubs.

The Park Hotel offers stunning views of Mount Ruapehu, Mount Ngāuruhoe, and Mount Tongariro. Whether you've walked the Tongariro Alpine Crossing, skied, snowboarded, ventured onto a mountain bike trail, or spent some time sightseeing in Ruapehu, The Park Hotel is a fantastic place to stay, relax, rejuvenate, wine, and dine.

Enjoy outdoor hot tubs all year-round or treat yourself to your favourite beverage in front of a roaring log fire before dinner at The Spiral.



i KEY INFORMATION



Number of Rooms: 80 three star hotel ensuite rooms in king double, twin, family mezzanine (queen double + 2 single) and quad mezzanine (4 singles) configuration.

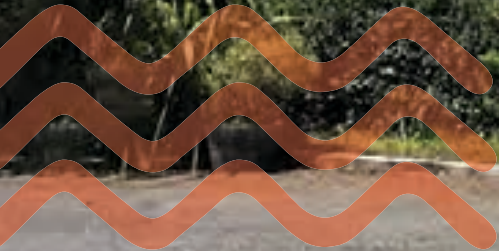
Facilities: Hot tubs, door to door Tongariro Alpine Crossing Shuttle (summer), free Wi-Fi, restaurant and bar, coin operated laundry and drying room, free off street parking and conference facilities.

Location: National Park
Email: bookings@the-park.co.nz
Phone: 0800 800 491
International Phone: +64 7 892 2748
Contact: Dene Priestley - General Manager
Email: gm@the-park.co.nz
Phone: +64 21 905 384

Address:
2/6 Millar Street
National Park Village 3948
Ruapehu
New Zealand

www.the-park.co.nz

TONGARIRO CROSSING LODGE



A family run boutique lodge, award-winning Tongariro Crossing Lodge caters for travellers seeking superior comfort in a warm and welcoming atmosphere.

With spacious and comfortable suites, the award-winning Tongariro Crossing Lodge offers a unique retreat to relax and recharge after your adventures in and around Tongariro National Park.

Set amongst beautifully maintained gardens, the Tongariro Crossing Lodge has a style and character of its own. Guests love the warm hospitality, immaculately clean suites, free unlimited Wi-Fi and being able to relax with a refreshing drink on hand in the cosy lounge bar or on the sunny terrace.

Guests also have the option of hearty breakfasts with freshly-baked bread as well as packed lunches, transport booking service, and expert tips on exploring this special area. Your hosts, Marina and Louis, look forward to welcoming you.

KEY INFORMATION

Number of Rooms: 6 rooms – twin/double mix with ensuite or shared.

Facilities: Wi-Fi, laundry, self contained units, BBQ, kitchen and outdoor setting.

Location: National Park Village

Email: welcome@tongarirocrossinglodge.co.nz

Phone: +64 7 892 2688

Contact: Louis van Wyk

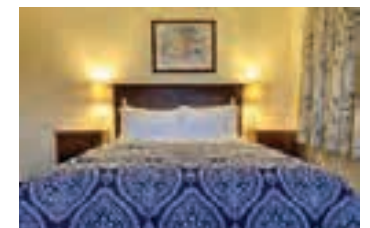
Address:

27 Carroll Street

National Park Village 3948

New Zealand

www.tongarirocrossinglodge.co.nz



MOUNTAIN HEIGHTS LODGE

The perfect base from which to explore Tongariro National Park, Mountain Heights Lodge is a haven for both summer and winter activities in Ruapehu and is conveniently situated along State Highway 4 on 220 acres adjacent to Tongariro National Park – a UNESCO Dual World Heritage Site and New Zealand's oldest national park.



Mountain Heights Lodge provides comfortable accommodation options including bed and breakfast and self-contained motel units for travellers. Lounge rooms come with a continental breakfast with a shared lounge with log fire and kitchen facilities. Motel units are self-contained spacious, with a kitchenette and bathroom.

Located just 2km south of National Park Village and adjacent to Tongariro National Park, Mountain Heights Lodge is an excellent base to explore the many wonderful activities in the area including the renowned Tongariro Alpine Crossing, snow sports on Mount Ruapehu and over 400km of cycle trails in Ruapehu, including the Mountains to Sea Ngā Ara Tūhono Connected Pathways – with direct access to the Marton Sash and Door Cycle Trail from our back doorstep. We also offer guided quad bike and buggy adventures all year-round.



KEY INFORMATION



Number of Rooms: 6 self-contained motel units and 4 lodge ensuite B&B rooms.

Facilities: Spa pool, breakfast available, free Wi-Fi, communal kitchen and lounge with log fire, drying room, shuttles service available, quad bike tours on-site, free off-street parking and direct mountain bike track access from the property.

Location: National Park Village
Email: mountainheights@xtra.co.nz
Phone: +64 7 892 2833
Contact: Maria Splitt

Address:
4576 SH4
National Park Village 3989
New Zealand

www.mountainheights.co.nz

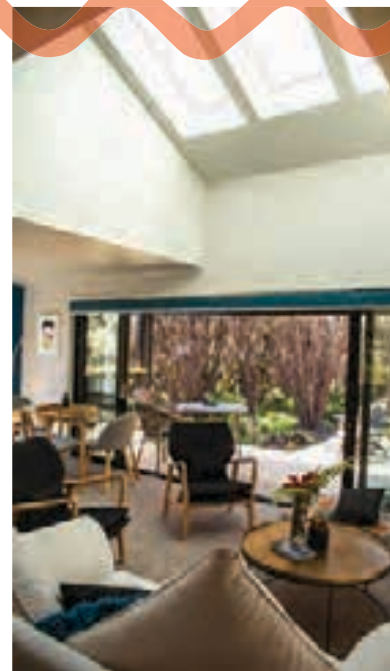
NIGHTSKY COTTAGE

As winners of Qualmark's coveted 5-star Gold Sustainable Tourism Business Award, Nightsky Cottage is a one-of-a-kind, luxury eco-retreat on the outskirts of Tongariro National Park. Set in one hectare of private land with New Zealand native manuka and beech trees, access to Nightsky Cottage is via a private 50-metre boardwalk purposefully built to preserve the natural environment it is situated in.



Nightsky Cottage offers guests a perfect combination of luxury and seclusion in pristine wilderness with a wide range of exciting activities at its doorstep. Come evening time, guests can enjoy the dark skies and stargaze from the warm comfort of the lounge thanks to cleverly designed ceiling skylights.

At 90 square meters, with 2 bedrooms each, including luxury king size beds, the lodge offers spacious but cosy living, with each room primed with fantastic views of native New Zealand wilderness and beyond. You can listen to native birdsong, or for the lucky ones, spot some wildlife including deer or the elusive kiwi.



KEY INFORMATION



Number of Rooms: 2, each with 1 king size bed (split king bed available on request).

Facilities: Spacious lounge dining area with cozy log fire and skylight windows, fully equipped kitchen with breakfast supplies, espresso machine and a range of custom blended teas, a large, covered deck with BBQ and outdoor dining, home-made bath salts, laundry, safe, free Wi-Fi and bluetooth speaker. Additional outdoor sitting areas in the bush and an additional deck with views of Mount Ruapehu.

Location: Horopito
Email: info@nightskycottage.co.nz
Phone: +64 21 828 077
Contact: Mandy Nguyen

Address:
16 Mead Lane
Horopito 4696
New Zealand

www.nightskycottage.co.nz

TONGARIRO SUITES

Conveniently located a short 10-minute drive from Ohakune, Tongariro Suites is set in one hectare of New Zealand native landscaped gardens and offers modern, premium accommodation central to all activities in the UNESCO Dual World Heritage Site of Tongariro National Park.



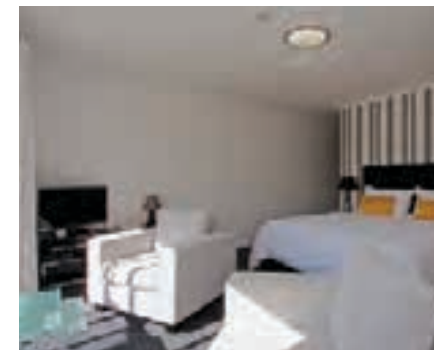
Tucked around the corner from the main highway, you will be surrounded by peace and tranquillity at Tongariro Suites with spectacular views of Mount Ruapehu from your suite. The property opened its doors in March 2014 and offers travellers an exceptional accommodation experience in Ruapehu.

The four large, luxury suites are furnished with European flair that accentuates the beauty of the property and surrounds.

All suites have generous living areas and full bathrooms, with some units offering freestanding bathtubs to relax in after a fantastic day exploring Tongariro National Park.

There is a large guest deck with stunning mountain views, a hot tub, sun loungers, and BBQ facilities. Guests also have access to a cosy guest lounge with a log fire, games, and a wide selection of books.

Enjoy the child free and smoke free environment where sustainability is a priority.



KEY INFORMATION



Number of Rooms: 4 rooms - 3 x king with ensuite, 1 x king + single with ensuite.

Facilities: Canadian hot tub, breakfast included, free Wi-Fi, BBQ facilities, log fire and lounge.

Location: Horopito
Email: info@tongarirosuites.co.nz
Phone: +64 21 828 077
Contact: Mandy Nguyen

Address:
27 Hutuwai Rd
Horopito 4696
New Zealand

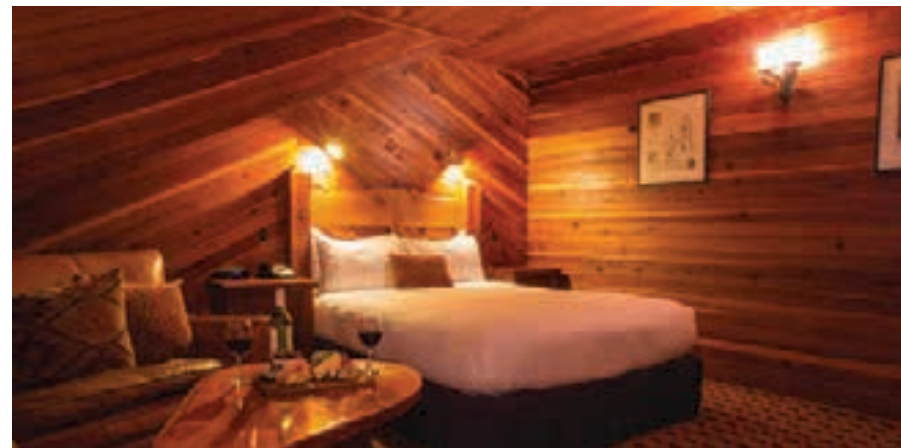
www.tongarirosuites.co.nz

THE POWDERHORN CHATEAU

The Powderhorn Chateau is a favourite destination for travellers, ski and mountain enthusiasts and is an ideal venue for events and special occasions. Steeped in local history, this stunning accommodation is an iconic gathering place for locals and visitors alike.



The Powderhorn Chateau's iconic building borders the southern slopes of Mount Ruapehu and the spectacular Tongariro National Park. Combining all the facilities of a 4-star Qualmark rated hotel with the ambience of a European alpine lodge, the Powderhorn Chateau features 30 well appointed, individually decorated suites and a private luxury apartment. The timbered interiors, welcoming beds and generous bathrooms create a welcoming and inviting space with quality fabrics and furnishings featured throughout.



KEY INFORMATION



Number of Rooms: 30 hotel rooms – double, twin, and triple mix. Houses and chalet accommodation options also available. These are fully self-contained and a short five minute walk from the hotel, perfect for families or small groups.

Facilities: Indoor heated swimming pool (no children under 5 permitted), two licenced in-house restaurants, conference facilities, Wi-Fi, portacots for hire (subject to availability), room service, in-house laundry facilities, drying room, bike storage and SKY TV.

Location: Ohakune
Email: info@powderhorn.co.nz
Phone: +64 6 385 8888
Contact: Annie G/Unique Stays

Address:
(Bottom of Mountain Road)
194 Mangawhero Terrace
Ohakune 4625, New Zealand

www.powderhorn.co.nz

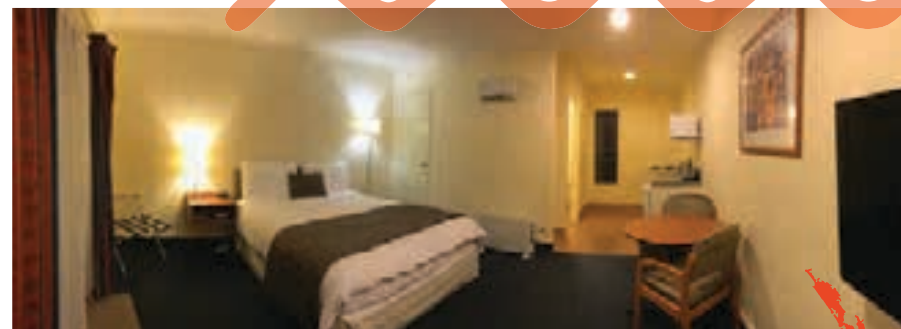
THE PEAKS MOTOR INN

The Peaks Motor Inn is conveniently located close to Ohakune's fine restaurants, bars and cafes, on the road leading to Ohakune Mountain Road which enters Tongariro National Park at the base of Mount Ruapehu.



The Peaks Motor Inn is conveniently located close to Ohakune's fine restaurants, bars and cafes, on the road leading to Ohakune Mountain Road which enters Tongariro National Park at the base of Mount Ruapehu. The Peaks features a choice of 23 secure, modern, quiet, spacious and warm studio units (sleep 1-3 people), king studios (2 people) and one-bedroom units (sleep 1-4 people). All units have ensuite and kitchen facilities, 'Sky Guest Select 50+' on LCD TVs and on-site free parking.

The Peaks Motor Inn is a fantastic base for your time in Ruapehu. Whether you are here for the mountain biking, great walks, snow sports or if you are just taking a break from everyday life.



KEY INFORMATION



Number of Rooms: 23 units – mix of double, twin and triple.

Facilities: Outdoor spa pools, free Wi-Fi, gym, sauna, guest laundry, drying room, bike storage and conference room.

Location: Ohakune

Email: reservations@thepeaks.co.nz

Phone: 0508 843 73257

International Phone: +64 6 385 9144

Key Contact Person: Ashish and Smita Dwivedi

www.thepeaks.co.nz

Address:

128 Mangawhero Terrace

Ohakune 4625

New Zealand

KINGS OHAKUNE

The iconic Kings Ohakune was first established in 1913 and sits proudly elevated with fantastic views of magnificent Mount Ruapehu.



Kings Ohakune offers a variety of rooms for singles, couples, friends, and families. Enjoy relaxing in one of two onsite spa pools after a day of activities and then indulge in a tasty locally brewed beverage on our expansive deck, with fantastic views of Mount Ruapehu.

Locally owned and operated we enjoy creating packages with local activity providers and suppliers to enhance our guest experience.

Our onsite restaurant and bar is adorned with images of the area over the years illustrating the building's rich history. Not only are there spectacular mountain views, you can also enjoy the pool table, darts boards or partake in one of our many karaoke nights!

There is an onsite drying room/bike storage for guests and laundry facilities available.

We have a smaller private dining room for functions, also perfect for breakfasts which can be arranged to order.

Kings is a lively, friendly, and inviting choice – a 3.5 star hotel with 5 star service!



KEY INFORMATION



Number of Rooms: 25 rooms – mix of queen double, twin or triple.

Facilities: Licenced bar and restaurant, 2 x spa pools, drying rooms, free Wi-Fi and function room.

Location: Ohakune
Email: info@kingsohakune.co.nz
Phone: +64 6 385 8648
Contact: Stu Robinson

Address:
3 Rimu Street
Ohakune 4625
New Zealand

www.kingsohakune.co.nz

RUAPEHU COUNTRY LODGE

Ruapehu Country Lodge is a Qualmark Silver 4-star Bed and Breakfast – this fully hosted accommodation is the perfect base for your stay in Ruapehu. Marie and Bernie invite you to stay in their superior boutique bed and breakfast accommodation and enjoy their exceptional hospitality.



Located just 5km out of Ohakune and 15 minutes from Tongariro National Park, Ruapehu Country Lodge also backs onto the Waimarino Golf Course – a par 72 championship course, open year-round.

Tongariro National Park is the home of the world-renowned Tongariro Alpine Crossing and hosts many spectacular cycle trails and nature walks. It is also the home of New Zealand's Whakapapa, Tūroa and Tūkino ski fields.

Experience a tranquil atmosphere and enjoy the beautiful expansive gardens. Relax in the comfort of your private courtyard. Whether you wish to break your journey or you are planning time away from the city, this is the perfect countryside bed and breakfast retreat.



KEY INFORMATION



Number of Rooms: 4 rooms – double or twin.

Facilities: Cedar wood hot tub, spa pool, free Wi-Fi, Freeview TV, Netflix, guest lounge with log fire, traditional Finnish sauna, BBQ, outdoor pizza oven, tea/coffee making amenities, double glazing, heater, fan, ironing facilities, laundry service is available, petanque, courtyard access, and expansive gardens with one-of-a-kind sculptures.

Location: Ohakune

Email: enquiries@ruapehucountrylodge.co.nz

Phone: +64 6 385 9594

Contact: Marie and Bernie Prendergast

www.ruapehucountrylodge.co.nz

Address:

630 Raetihi Ohakune Road

Ohakune 4660

New Zealand

ROCKY MOUNTAIN CHALETs

Experience New Zealand's pristine environment from the comfort of your own modern, self-catering chalet. Designed with your enjoyment and comfort in mind, these chalets offer everything you need for a romantic weekend escape, a family holiday or a group getaway.



Each Rocky Mountain Chalet is completely unique in décor, design, and configuration with over 40 accommodation options available making this a great property with a large offering.

Each chalet features comfortable bedding, a warm intimate living area, fresh linens, and tasteful décor, while our exclusive property offers guests with the use of three hot pools, a 4 person sauna and a bike washing station.

As part of your guest stay experience we have an onsite 7 seater guest shuttle if you need to be picked up or dropped off in the local area.

Treat yourself to arguably the best accommodation in Ohakune – a haven of relaxation and adventure on the fringes of one of New Zealand's most popular family skiing, biking, hiking, canoeing, jetboating and trout fishing destination. Based in the foothills of Mount Ruapehu, in the heart of the Ruapehu region on the doorstep of the Tongariro National Park, your Rocky Mountain Chalet awaits.



KEY INFORMATION



Number of Rooms: 34 x 2 bedroom chalets, 8 x 3 bedroom chalets.

Facilities: Spa pools, sauna, free Wi-Fi, self contained chalets with full kitchen and laundry facilities, drying rooms and communal chalet.

Location: Ohakune
Email: info@rockymc.co.nz
Phone: +64 6 385 9545
Contact: Will and Sherryan

Address:
20 Rangataua Road, SH49
Ohakune 4660
New Zealand

www.rockymountainchalets.com

MANUKA LODGE

Manuka Lodge is an upmarket Bed and Breakfast located in the charmingly picturesque mountain town of Ohakune. The B&B has four guest rooms, two on the ground floor and two on the first floor.



Three of these are generously sized ensuite rooms with super king beds, and one is a smaller queen bedroom. We can offer a range of configurations, from doubles to twins and even triples as required. All rooms are elegantly appointed and recently refurbished.

We also have a spacious guest lounge, and outdoor deck area for the summer months, both of which boast views of Mount Ruapehu. Additional facilities include an outdoor hot spring spa pool, perfect for starry nights. There is also a drying room on-site.

Included in the tariff, full breakfast is offered daily. This comprises of cereal, fresh fruit, yoghurt, orange juice and tea/coffee, with a cooked choice of either full English breakfast or French toast. Home baked bread too – always popular. All ingredients are locally sourced where possible – the local eggs are spectacular!

We have a genuine passion for providing first-class accommodation and hospitality to complement and enhance your time spent in the beautiful Ruapehu region.



KEY INFORMATION



Number of Rooms: 4 rooms – ensuite with double or twin.

Facilities: Free Wi-Fi, guest lounge with open log fire, drying room, outdoor activity equipment storage, outdoor spa pool, laundry, hair dryer and central heating.

Location: Ohakune
Email: stay@manukalodgenz.co.nz
Phone: +64 6 385 8303
Contact: Alan or Susie Hancorn

Address:
18 Manuka Street
Ohakune 4625
New Zealand

www.manukalodgenz.com

THE RIVER LODGE

Nestled along the banks of the Mangawhero River, The River Lodge is a peaceful oasis of tranquil gardens sheltered by native beech trees offering picturesque self-contained wooden chalets and suites.



With breath-taking views of Mount Ruapehu and located in close proximity to the UNESCO Dual World Heritage Site of Tongariro National Park, The River Lodge is the perfect accommodation to experience the essence of this unique region, in complete comfort and style.

Nestled in tranquil gardens sheltered by native beech trees, take your time to enjoy one of New Zealand's first-class wines while you watch the sun set on Mount Ruapehu.

Relax riverside, with the Mangawhero River bordering much of the lodge surrounds and immerse yourself in the serenity and nature around you.

The River Lodge is an ideal base to explore the area with a range of activities for everyone to enjoy - with skiing, snowboarding, trout fishing, hunting, hiking, mountain biking, and canoeing all available in the world-famous Ruapehu region, home to two national parks side by side - Whanganui National Park and Tongariro National Park.

Nearby attractions include the Tongariro Alpine Crossing, the Ohakune Old Coach Road Bike Trail and the mystical Whanganui River.

The River Lodge also suits as a wedding venue and event place for up to 200 guests.



KEY INFORMATION



Number of Rooms: 7 rooms – A mix of double, triple, and quad rooms/chalets with ensuite.

Facilities: Free Wi-Fi, wine and beer bar, spa pools and wooden hot tubs, BBQ, pizza oven, smoker, bonfire and rich continental breakfast provided.

Location: Ohakune
Email: info@theriverlodge.co.nz
Phone: +64 21 292 2883
Contact: Daniel Schlumpf

Address:
206 Mangawhero River Road
Ohakune 4691
New Zealand

www.theriverlodge.co.nz

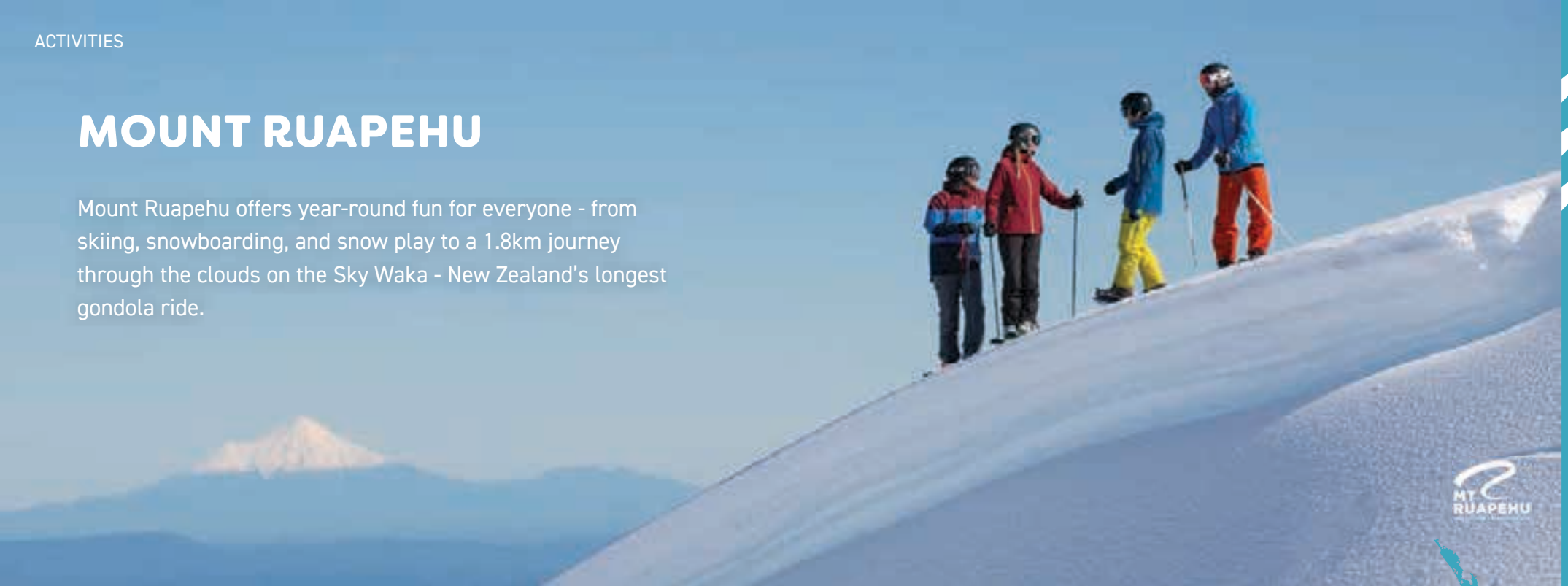


ACTIVITIES



MOUNT RUAPEHU

Mount Ruapehu offers year-round fun for everyone - from skiing, snowboarding, and snow play to a 1.8km journey through the clouds on the Sky Waka - New Zealand's longest gondola ride.



Mount Ruapehu is a magnificent natural icon of Ruapehu's landscape and lies within the internationally recognised UNESCO Dual World Heritage Site of Tongariro National Park – New Zealand's oldest national park.

In the summer season, enjoy a stunning journey above this natural wonderland on the Sky Waka Gondola Ride at Whakapapa where you will arrive at the award-winning Knoll Ridge Chalet – New Zealand's highest dining experience at 2,020m above sea level with views that will take your breath away. Enjoy a delicious range of dining options as well as numerous walks ranging from 20mins to 4hrs to explore the incredible, rugged volcanic environment.

When winter season arrives, Mount Ruapehu gears into full swing with the ski areas opening up – including Whakapapa ski area, home to Happy Valley, New Zealand's premier beginner's facility to learn to ski and ride – only a 10-minute drive from Whakapapa Village and its range of idyllic mountainside accommodation.



Tūroa ski area, on the south-west facing slopes of Mount Ruapehu is known for huge snow bases, unique volcanic terrain, wide trails, and world class terrain parks. Boasting New Zealand's longest vertical descent at 722m, this place is extremely special to local iwi and residents and it's easy to see why. Tūroa also boasts 3 dining options for delicious apres-ski with stunning scenery.



KEY INFORMATION

Email: sales@mtruapehu.com
International Phone: +64 800 468 235

Locations:

Whakapapa
Top of State Highway 48
Mount Ruapehu 4691

Tūroa
Ohakune Mountain Road
Mount Ruapehu 4691

Season: June – October

Check out www.mtruapehu.com for the latest info on family deals, midweek specials, and other offers.



RUAPEHU BREWING CO. & BIG MOUNTAIN MEAD

Ruapehu Brewing Co. and Big Mountain Mead offers a fascinating insight into the production of award-winning craft beer and ancient mead.



Join our experienced brewers and mazers on a captivating tour, where you'll discover the process behind crafting beer using barley, hops, yeast, and water. Additionally, we'll unveil our collaboration with honeybees to create mead, a delightful beverage made with honey, water, and yeast. As the tour concludes, indulge in a guided tasting of our exceptional products. Ever wondered how your favourite drink is canned or reaches the tap?

Satiate your curiosity by joining our passionate brewing team on this enlightening tour. Don't forget to enjoy the gift shop and treat yourself to some takeaway beer and mead. You can fill up a flagon, grab a six pack from the fridge or pick up some souvenirs to remember your visit. We have a wide range of t-shirts, hats, glassware and more.



KEY INFORMATION

Email: beer@ruapehubrewing.co.nz
Phone: +64 21 035 9938
Contact: Austin Hobson

Address: 17 Goldfinch Street
Ohakune 4625, New Zealand

Price range: \$40 - \$50 per person
Product: Brewery and meadery tour and tasting

www.ruapehubrewing.co.nz
www.bigmountainmead.com



FORGOTTEN WORLD ADVENTURES

Forgotten World Adventures offer guided rail cart tours into a unique part of New Zealand known as the Forgotten World. Rugged and remote, early transport in this region was via the Whanganui River until the railway link was established in the early 1900s.



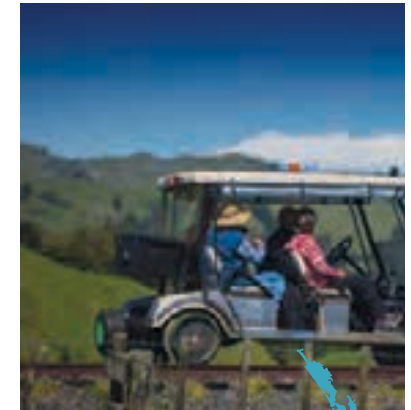
The rail line is now decommissioned and from the comfort of Forgotten World Adventures' specially modified, motorised, and self-drive rail carts, guests are immersed in the true stories, tall tales and historic remnants of a region lost to the years as they travel through rolling rural landscapes and lush native vegetation.

Passing through many hand-constructed tunnels, each exit is a vista that offers a unique perspective along this fantastic rail cart adventure.

The other treasure of Forgotten World Adventures includes the mystical Whanganui River. Our 15-seater jet boat gives a comfortable, yet breath-taking ride downstream to the Bridge to Nowhere in the valley of abandoned dreams.

Our professional boat drivers share the history of early Māori settlement through to when early European farmers tried and failed at breaking in the land.

From short day tours to multi-day adventures across this diverse landscape, rail and river can entwine together to capture the natural essence of this region and the hidden depths of Whanganui National Park.



KEY INFORMATION

Email: bookings@fwa.co.nz
Phone: +64 7 895 7181
Contact: Kara Matheson

Address: 9 Hakiaha St,
Taumarunui 3920, New Zealand

Price Range: \$345 - \$3,280 PP
Time Range: From 5.5 hours
Product: Guided rail cart adventures from October-May, jet boat and helicopter tours.

www.forgottenworldadventures.co.nz



RUAPEHU ADVENTURE RIDES

Ruapehu Adventure Rides offer guided quad bike and buggy adventures through farmland, native bush, and natural stream crossing with incredible views of Tongariro National Park.



Overlooking the UNESCO Dual World Heritage Site of Tongariro National Park, Ruapehu Adventure Rides offers fun outdoor adventures for the entire family – children under 16 can go in the buggy operated by our professional guides with adults following on the quads.

A safety induction upon arrival with all guides qualified ATV and First Aid certificate holders. All gear is provided including helmets, raincoats, wet weather pants, gumboots and gloves. Photos and videos are also taken throughout your adventure for you.

Located 25 minutes from the ski fields and 5mins from National Park village. A range of exhilarating outdoor activities include 1hr, 1.5hrs, 2hrs and half-day rides to fit into any itinerary.



i KEY INFORMATION

Email: info@ruapehuadventurerides.co.nz
 International Phone: +64 7 892 2952
 Phone: 0800 787 433
 Contact: Maria and Karl Splitt
 Ruapehu Adventures Rides is based out of Mountain Heights Lodge.

Address:
 4576 State Highway 4
 National Park Village
 Ruapehu 3948
 New Zealand

Price Range: \$29 - \$275
 Time Range: ½ hour – ½ day
 Product: Quad and buggy rides

www.ruapehuadventurerides.co.nz



WHANGANUI RIVER ADVENTURES

Born and bred on the banks of the beautiful Whanganui River, the owners and staff of Whanganui River Adventures have a wealth of knowledge that has been passed down from generation to generation - authentic stories and rich history that highlight the beautiful connection between people and place.



Whanganui River Adventures offers guided and un-guided tours along the mystical Whanganui River. One of the most popular experiences is the majestic Bridge to Nowhere Tour – a remote, iconic bridge steeped in history in the heart of Mangapurua Valley cloaked in steep native bush.

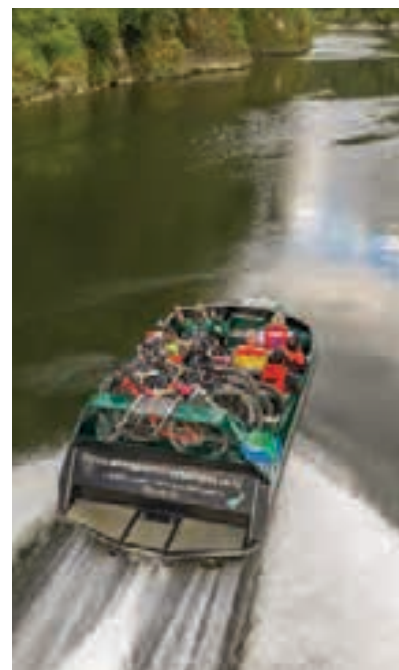
Other tours include one day canoeing for those who want to enjoy the beauty of the Whanganui River in one day as well overnight tours which includes an overnight stay at a picturesque campsite along the river and a leisurely canoe back to Pipiriki the following day.

Pick-ups are available from the Mangapurua Landing for guests wanting to do the day bike ride through the valley, 3 days hiking through the native forest of the Matemateaonga Track from Taranaki, or for those journeying through the Mountains to Sea Cycle Trails or Te Araroa walking trail.

As ancestors of the many hapus (sub-tribes) along the Whanganui River, and the local iwi – Te Atihaunui – a Paparangi descending over 100 years or more, guests can experience the historic Whanganui River – recognised as a living entity, learn about how guardians uphold the river's environmental, social, cultural, and economic well-being.

Owned and operated by locals Ken and Josephine Haworth, Whanganui River Adventures operates as a commercial jet boat and canoe business based in Pipiriki.

Combined many years of experience, local knowledge and a love and respect for the Whanganui River, Ken and Josephine warmly invite you to authentic Whanganui River adventures - taking great pride to deliver exception service for all new and returning guests. It's a unique opportunity to immerse yourself in the long history of transport and life on the river spanning over 100 years. Jet boat tours are available year-round with canoe trips available during the warmer summer months.



KEY INFORMATION

Email:
info@whanganuiriveradventures.co.nz
International Phone: +64 6 385 3246
Phone: 0800 862 743
Contact: Ken and Josephine Haworth

Address:
2522 Pipiriki Raetihi Rd
Pipiriki 4576
New Zealand

Price Range: \$175 per adult (Bridge To Nowhere Tour) \$225 per adult (Overnighter)
Time Range: 6 hours – 2 days
Product: Jet boats, canoeing, local Māori history, and river transport for mountain bikers. Campground as well as eco cabins available for accommodation.

www.whanganuiriveradventures.co.nz



WHANGANUI RIVER CANOES

Guests can explore all of the history and mystery the Whanganui River has on show, in their own time, in their own way with Whanganui River Canoes with the awesome team at Whanganui River Canoes.



Locally owned and operated Whanganui River Canoes offers fantastic one-day or multi day canoe tours along the majestic Whanganui River.

Choose to paddle with a guide, with food and accommodation options available or simply enjoy the option of a freedom hire.

Whanganui River Canoes take pride in maintaining their canoes, life jackets and canoe equipment so guests feel comfortable and safe as they paddle.

Based in the beautiful and welcoming Raetihi Holiday Park, visitors can either catch the Intercity bus to Whanganui River Canoes' base or drive and leave their vehicle with us for multi-day canoe tours.

For those who also want to adventure on land, Whanganui River Canoes also offer mountain bike hires and shuttles as well as daily shuttles to the Tongariro Alpine Crossing.



KEY INFORMATION

Email: info@whanganuirivercanoes.co.nz
 International Phone: 0800 40 88 88
 Other: +64 6 385 4176
 Contact: Rebecca Mead or Ben Adam

Address: Raetihi Holiday Park, 10 Parapara Rd, SH4, Raetihi, New Zealand

Price Range: \$180 - \$955

Time Range: 3 - 6 days

Product: Canoeing, kayaking, hiking

www.whanganuirivercanoes.co.nz



NEVALEA ALPACAS

Nevalea Alpacas, the largest alpaca farm in New Zealand is home to over 1,100 friendly alpacas.



Nevalea Alpacas offer visitors "The Ultimate Alpaca Experience" and have a range of interactive activities to choose from that provides visitors the opportunity to get up close with the alpacas, hand feed them and feel just how soft, cuddly and friendly the alpacas are.

A year-round destination, Nevalea Alpacas is a unique and unforgettable experience where you can venture on alpaca treks throughout the summer months. During the cooler months, shorter treks are available. Visitors can take an alpaca for a walk around the farm, and lots of photos with the adorable alpacas in the most picturesque hills with spectacular views.

Nevalea's award-winning alpacas are great for up close and personal experiences with fantastic photo opportunities. There are captivating crias (baby alpacas) for year-round cuddles too! Visitors will enjoy a tour of the charming farm shop where Nevalea's designer range of alpaca garments made on-site can be purchased or enjoy a cuppa or sweet treat from the café.

Nevalea Alpacas also welcomes group bookings for educational or special interest groups with a range of opportunities to learn about alpacas including how they are shorn through to how their fibre is transformed into the designer garments in the farm shop.

KEY INFORMATION

Email: leonie@nevaleaalpacas.co.nz
Phone: +64 7 896 6333
Contact: Leonie

Address:
5446 State Highway 4
Taumarunui
New Zealand

Price Range: \$7.50 - \$69
Time Range: 15 minutes – 2 hours
Product: Alpaca encounters, shop

www.nevaleaalpacas.co.nz



NATIONAL ARMY MUSEUM TE MATA TOA

The National Army Museum Te Mata Toa is New Zealand's most comprehensive army museum and provides access to a unique collection of military exhibits, vehicles, memorabilia, and public research material.



Visitors to the museum will be inspired by real-life soldier stories, discover New Zealand's military history, and reflect on how conflict has shaped the nation.

Located at the outskirts of Mount Ruapehu on State Highway One, the National Army Museum Te Mata Toa in Waiouru is conveniently situated halfway between Auckland and Wellington. Travellers have an opportunity to unwind and relax, combining a fascinating museum visit with a delicious lunch or coffee at The Mess Tent.

The incredible setting of the nearby Tongariro National Park offers easy access to a world-class outdoor adventure playground. Must see attractions at the museum include the Roimata Pounamu – Tears on Greenstone memorial wall –the largest jade (nephrite) structure in the Southern Hemisphere. There is also an extensive medal collection, iconic military vehicles, lifelike displays, and an interactive Kids HQ space and research centre.

The museum also offers a variety of additional services including a gift shop, guided tours, smart phone tours, educational programmes, catering and conference facilities, electric car charging station and camping for overnight vans. The Museum also sells a wide range of gifts and military memorabilia at their gift shop, The Quartermaster Store.



KEY INFORMATION

Email: nicola.bennett@nzdf.mil.nz

Phone: +64 6 387 6911

Contact: Nicola Bennett

Address:

State Highway One and Hassett Dr
Waiouru 4861
New Zealand

Price Range: \$15 - \$48

Time Range: 30 minutes – 1 day

Product: Museum, café, shop

www.armymuseum.co.nz



ADRIFT TONGARIRO

Experience New Zealand's rugged and beautiful landscape on the world-renowned Tongariro National Park (a UNESCO Dual World Heritage Site) as well as the pristine wilderness of Whanganui National Park alongside Adrift Tongariro's highly-skilled professional guides who are keen to share their local history and knowledge with you.



Take in some of the most spectacular scenery that New Zealand has to offer and uncover the natural wonders, stories, histories, and legends of Tongariro National Park – a UNESCO Dual World Heritage site of cultural and natural significance. The three iconic peaks of Mount Ruapehu, Mount Tongariro and Mount Ngāuruhoe dominate the awe-inspiring landscape of this cherished national park.

Adrift Tongariro offers guided one day and multi-day treks, walks, canoe trips and mountain bike tours for people of all abilities and skill levels to enjoy Ruapehu's greater outdoors.



KEY INFORMATION

Email: info@adriftnz.co.nz

Phone: +64 7 8922 751

Contact: Mary Hamer

Address:

53 Carroll St, National Park 3948
New Zealand

Price Range: \$115 - \$950

Time Range: 2 hours – full day

Product: Guided hiking, guided mountain biking, guided canoeing.

www.adriftnz.co.nz



BLAZING PADDLES OUTDOORS

For adventurers and those adventurous at heart, personalise your own unforgettable journey in the Central North Island's Volcanic Plateau with Blazing Paddles.



Experience a one day "Splash 'n Dash" canoe trip to the ultimate five day "full monty" on the Whanganui River. Cover some ground with our helicopter or jet boat excursions or perhaps a combo trip with options including the iconic mountains of Ruapehu, Ngāuruhoe and Tongariro that dominate this area as well as the Bridge to Nowhere, Blue Duck Station, Posh Pioneers and Lauren's Lavender Farm.

Fly Fish the pristine headwaters for trophy brown and rainbow trout with expert local guides, home to the World Fly Fishing Championships in 2008.

Range of accommodation options are available from riverside to luxury country lodges. Helicopter tours are available from additional base north of Raetihi.



i KEY INFORMATION

Email: info@blazingpaddles.co.nz
 Phone: 0800 BLAZIN – 0800 252946
 International Phone: +64 21 991 564
 Contact: Glenn Martin

Address:
 985 State Highway 4
 Piriaka, RD2,
 Taumarunui 3992
 New Zealand

Product: Canoe adventures, jetboating,
 fly fishing, helicopter and garden tours.

Price Range: \$200 - \$2,500

www.blazingpaddles.co.nz



OWHANGO ADVENTURES

Ideally located in the central Ruapehu region and surrounded by scenic bush, Owhango Adventures is surrounded by lush native bush with the Whanganui and Whakapapa Rivers at your doorstep.

Born and bred on the banks of the Whanganui River, Owhango Adventures are tangata whenua, people of the land, and invite you to embark on a guided, cultural canoe journey along the Whanganui River.



With our modern fleet of Canadian Canoes and accompanying gear, we offer both self-guided and culturally guided canoe journeys along the Whanganui River.

With local, qualified cultural navigators passionate about sharing the rich history of the Whanganui River as well as their personal connection to the river, your journey with Owhango Adventures will be one to remember.

Owhango Adventures is a popular choice for visitors looking to experience the Whanganui River at its best.



i KEY INFORMATION

Email: info@owhangoadventures.co.nz

Phone: 0800 2 CANOE

International Phone: +64 27 678 6461

Address:

State Highway 4, Ōwhango,
Ruapehu 3989, New Zealand

Price Range: \$120 - \$1,250

Time range: Half day, full day and multi day and overnight tours

Product: Guided cultural canoe tours on the Whanganui River with options for mirimiri (traditional Māori healing and massage) and rongoa (traditional Māori medicine). Jetboat tours, guided Tongariro Alpine Crossing Kaitiaki tours and walks, Tongariro Alpine Crossing shuttles and accommodation, guided mountain bike tours and shuttles, freedom hire canoeing and kayaking on the Whanganui River.

www.canoewhanganuiriver.com

DEMPSEY BUSES

Established in 1986 and located between the Whanganui National Park and the UNESCO Dual World Heritage Site of the Tongariro National Park we are ideally situated to transport you to the many attractions that this amazing district has to offer.



Our fleet of modern well maintained vehicles and our experienced and knowledgeable drivers are ready to share with you the spectacular scenery of the Tongariro Alpine Crossing with our daily shuttle services (Oct-May) departing Ohakune/Raetihi/National Park. Travel with us to the Great Rides of New Zealand Mountain Biking tracks in the district, the family friendly Ohakune Old Coach Road, the more remote Bridge to Nowhere or the multiday Nga Ara Tuhono Mountains to the Sea.



KEY INFORMATION

Email: Info@dempseybuses.co.nz
Phone: +64 6 385 4022

Address:
24 Seddon Street
Raetihi 4632
New Zealand
Contact: John Dempsey

Product: Shuttle transport for hiking, biking and skiing and anything to do with getting around the Ruapehu District and beyond and van hire.

www.dempseybuses.co.nz



WHANGANUI TOURS

Discover the beauty of the Whanganui River Road with our passionate team of local experts. We have unparalleled knowledge of the area, and offer unique tour combinations such as Scenic Mail Run, Bridge to Nowhere River trips, Cycle Trail tours, and more. Our team is dedicated to making your experience unforgettable with our whakapapa (ancestry) and manaakitanga (hospitality). Let us take care of everything and help you explore the Whanganui National Park.



Welcome to Whanganui Tours! Our team of locals, including Tracy who grew up on the Whanganui River, are dedicated to creating meaningful connections between people and the stunning landscapes of the Whanganui River Road and surrounds. As Rural Mail carriers, we have a unique perspective and passion for the area. Our small team, local knowledge, and relationships, allow us to tailor each experience to the individual, creating an unforgettable journey. With strong iwi (Māori tribe) connections and a focus on manaakitanga, we ensure that you take a piece of our heart with you on your adventure.

We go the extra mile to provide special itineraries in partnership with local providers, so you can make the most of your visit and go home with amazing memories. Our commitment to sustainable tourism is at the forefront of everything we do, promoting and living by the tenets of the TIA Commitment to Sustainable Tourism. As official business partners of Mountains to Sea - Ngā Ara Tūhono and Qualmark accredited, we strive to develop economically, environmentally, and culturally sustainable visitor practices. Join us and experience the beauty of the Whanganui River with our passionate team.



KEY INFORMATION

Email: whanganui.tours@gmail.com

Phone: +64 211 304 617

Contact: Tracy Marshall

Price Range: From \$25 - \$1,685pp

Product: Luggage transfers, shuttles, bike hire, scenic mail tour, supported cycle packages and river trips.

www.whanganuitours.co.nz

TCB SKI BOARD BIKE

TCB Ski Board Bike is a specialist Ski Board and Bike shop right in the heart of Ohakune.

We retail, rent, and service skis, snowboards and bikes. TCB stocks all the clothing and accessories for your next adventure as well. We specialize in top line rental equipment with outstanding personal service and have transport going to all locations 7 days a week. So for retail, rental, repairs or transport make sure you try the TCB experience.

Ride along the historic Ohakune Old Coach Road, This native bush corridor on the slopes of Mount Ruapehu is an exciting adventure, a journey back in time. Ride past the concrete piers for the bridge which crossed the Haeremaere Stream on the original railway alignment, the steel lattice Taonui Railway Viaduct, and enjoy expansive views across the Waimarino Plains and of the mighty Mount Ruapehu. View the magnificent Rimu trees and of course the Hapuawhenua Viaduct. A fantastic day ride for people of all ages.

Start your journey at TCB Ski Board Bike in Ohakune where you will be fitted with a helmet, bike and safety kit, given a safety briefing and talked through the ride. We also offer a free app to help guide you through the trip. Once you are ready our shuttle will take you and your bike to the Horopito end of the Old coach road. Horopito is 180m higher than Ohakune so overall you have an easier ride. The ride will cover open farmland, native bush, viaducts, train tunnels and much more. As you arrive at the Ohakune end of the trail there is an optional pump track and beautiful ride down besides the Mangawhero river back to TCB where you finish the ride.

We have options in standard mountain bikes, full suspension bikes and E-bikes.



KEY INFORMATION

Email: tcbinfo@xtra.co.nz
 Phone: +64 6 385 8433
 Contact: Ben Wiggins
 Price Range: From \$20 to \$200 pp
 Product: Bike rental, bike shuttles and group bike tours.

www.tcb.nz



TIMBER TRAIL ADVENTURES

Timber Trail Lodge, Shuttles and Bike Hire, deep in the centre of Aotearoa's North Island, right in the middle of nowhere, is a very special place. The Timber Trail is considered one of the best two-day mountain bike rides in New Zealand, part of Te Haerenga, the New Zealand Cycle Trail and is one of 23 Great Rides. The 85km grade 2-3 trail is popular with people of all ages and suitable for anyone with moderate fitness and off-road biking experience.



The lodge is nestled on the edge of stunning native podocarp forest. Special off-grid facilities and sustainable features make it the ideal venue for a relaxing and comfortable stay in the historic and protected Pureora Forest.

The lodge opened in April 2017 and accommodates a total of 50 people with a mix of double/twin and triple rooms. Guests enjoy healthy, nutritious meals with a focus on natural and local ingredients, served family-style in a relaxed, informal atmosphere.

Our biking packages make planning a Timber Trail adventure easy. Packages include shuttles, boutique accommodation, all meals, bag transfers and bike hire (if required). The lodge is a perfect off-grid venue for group and conference/retreat bookings.



KEY INFORMATION

Email: Stay@timbertrailodge.co.nz

Phone: 0800 885 6343

International: +64 21 562 001

Contact: Janine

Price Range: \$265 to \$630 pp

Time range – 1 to 2 days.

Product: Shuttle transport, accommodation and hospitality, mountain bike and e-bike hire – all year around. Conference/group accommodation and meeting space available.

Web: www.timbertrailodge.co.nz



Email: mahalee@visitruapehu.com
Contact: Mahalee Guieysse
Phone: +64 21 2442 887

www.visitruapehu.com

